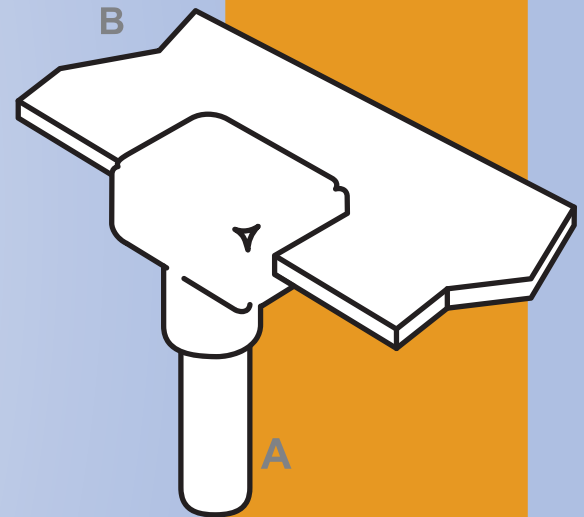


Rod Size		Conductor Size	Metal Powder (g)	Graphite Mould Type	Handle Clamp Type
A mm	A inch	B mm x mm			
12.7	1/2	20 x 2	65	BR7-E-127202	HCC
		20 x 3	65	BR7-E-127203	HCC
		20 x 4	90	BR7-E-127204	HCC
		25 x 2	65	BR7-E-127252	HCC
		25 x 3	90	BR7-E-127253	HCC
		25 x 4	90	BR7-E-127254	HCC
		30 x 2	65	BR7-E-127302	HCC
		30 x 3	65	BR7-E-127303	HCC
		40 x 3	65	BR7-E-127403	HCC
		50 x 3	65	BR7-E-127503	HCC
		14.2	5/8	20 x 3	90
20 x 4	115			BR7-E-142204	HCC
25 x 3	90			BR7-E-142253	HCC
25 x 4	115			BR7-E-142254	HCC
25 x 5	150			BR7-E-142255	HCC
25 x 6	150			BR7-E-142256	HCC
30 x 2	90			BR7-E-142302	HCC
30 x 3	90			BR7-E-142303	HCC
30 x 5	150			BR7-E-142305	HCC
30 x 6	150			BR7-E-142306	HCC
40 x 3	90			BR7-E-142403	HCC
40 x 5	150			BR7-E-142405	HCC
40 x 6	150			BR7-E-142406	HCC
50 x 3	90			BR7-E-142503	HCC
50 x 5	150			BR7-D-142505	HCD
50 x 6	150			BR7-D-142506	HCD
17.2	3/4			20 x 3	115
		20 x 4	115	BR7-E-172204	HCC
		25 x 3	115	BR7-E-172253	HCC
		25 x 4	150	BR7-E-172254	HCC
		25 x 6	200	BR7-E-172256	HCC
		30 x 2	115	BR7-E-172302	HCC
		30 x 3	115	BR7-E-172303	HCC
		30 x 5	200	BR7-E-172405	HCC
		30 x 6	200	BR7-E-172306	HCC
		40 x 3	115	BR7-E-172403	HCC
		40 x 5	200	BR7-D-172405	HCC
		40 x 6	200	BR7-D-172406	HCD
		50 x 3	115	BR7-E-172503	HCC
		50 x 5	200	BR7-D-172505	HCD
		50 x 6	200	BR7-D-172506	HCD

BR7

Bus Bar to Ground Rod
Horizontal flat bar thru to ground rod



Tools Request :



Mould



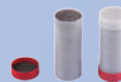
Mould brush



Handle clamp



Scraper



Metal powder



Steel disk



Flint igniter



Bus bar brush